



SENTINEL

News & Updates from Methodist Family Health Foundation

Visit our Website



Methodist Family Health Breaks Ground on New Spiritual Life Center

Methodist Family Health is breaking ground on its newest, multi-use building at its oldest campus in Little Rock at 10:30 a.m. on its YouTube channel ([YouTube.com/MethodistFamilyHealth](https://www.youtube.com/MethodistFamilyHealth)) on Tues., Oct. 12.

The state's only complete continuum of care for Arkansas children and families who are abandoned, abused, neglected and struggling with psychiatric, behavioral, emotional and spiritual issues, Methodist Family Health raised \$4.2 million to construct the Mike Millar Spiritual Life Center on the campus of the Methodist Children's Home at 2002 S. Fillmore St. in Little Rock. The new center is named in memory of Mike Millar, a lifelong United

Methodist from Searcy, Arkansas who served on both Methodist Family Health's operations and foundation boards of directors. Millar was a prominent attorney, philanthropist and volunteer who died in 2020. The chapel of the center is named in memory of Elaine and Bishop Kenneth Hicks, longtime supporters.

Construction of this facility will begin in October and should be completed in summer 2022. It will replace the original chapel on Methodist Family Health's oldest campus, Methodist Children's Home.

In October 2020, the Mabee Foundation awarded a challenge grant of \$950,000 to Methodist Family Health Foundation for the construction of the Mike Millar Spiritual Life Center. This challenge grant stipulated Methodist Family Health Foundation raise the total project cost of \$4,256,175 by October 13, 2021. The challenge was met in July 2021, and a total \$4,259,671.72 has been raised.

"In addition to the Elaine and Bishop Kenneth Hicks Chapel, this center will include a multipurpose space, a welcome center for the campus, and administrative space for our Methodist Children's Home administrators," said Carolyn McCone, CFRE, executive director of Methodist Family Health Foundation. "We also will include an outdoor labyrinth, new landscaping, and enhanced parking to complement the center. The facility will also provide space for community partners to meet for neighborhood association meetings and community education."

For more information about the Mike Millar Spiritual Life Center or Methodist Family Health, visit MethodistFamily.org.



Jason Lee Hale



Photography by Jay Wedaman

Catching up with Jason Lee Hale is like visiting an old country store: relaxed, friendly, honest and unassuming. With a quick wit and infinite heart for music and his community, Jason, who is a native of England, Arkansas and now calls North Little Rock home, worked with Methodist Family Health to create our own signature song, "This is the Time to Shine." The song is the foundation of our organization's newest campaign, which will launch November 15. For a broader appreciation of Jason and his contributions to Arkansas's music heritage, read on.

Q: How long have you been a singer, songwriter and musician?

A: 37 years. I started playing guitar seriously at 14 and quickly put together a band with some of my high school friends. Right away, we began bashing out and recording our own compositions, some of which weren't bad. I didn't begin earning money at it until I was 21. I thought if I learned how to play more than one instrument I'd make more money. I was wrong, but it's been fun.

Q: What got you interested in music?

A: I come from a musical family. My grandmother, Margaret Ann Hale, was a multi-instrumentalist and sang beautifully. As a child, I wasn't particularly interested in the music she preferred to play, but she definitely had a lot to do with it, and I still have all of her old instruments. I would hear music anywhere, on the radio or television, and be completely swept up by it. To this day, if I hear a song that I like, I'll imagine myself singing or playing it. There's no escape.

Q: What made you decide to work with Methodist Family Health when approached to write an original song for the new campaign?

A: I deeply believe in helping others and, when I learned of all that they do for families who need them, there was no hesitation. I wanted to do it. I wanted to be a part of it.

Q: Other than perform with your band, Jason Lee Hale and the Personal Space Invaders, what plans do you have for your music?

A: These days it's easy to share your music with anyone who wants to hear it. I'm having a great time writing and recording with my band and the array of friends we've made along the way. We're going to keep putting music out there and keep enjoying ourselves. If I make enough money from recording to buy a burrito every now and then, I'll call it a win.

Q: What did you learn about Methodist Family Health while working on "This is the Time to Shine"?

A: That I had underestimated all they do to make a positive impact on the lives of so many. It amazed me to learn of the tools, expertise and history they have, and I'm grateful to have been given the opportunity to help.

LATEST NEWS & EVENTS

Methodist Family Health Foundation Hits the Road



Amanda Smith, director of development with Methodist Family Health Foundation, accepts a gift from Judy Vangel Gore from Hot Springs Village's Christ of the Hills UMC Missions Committee.

Amanda Smith recently presented to the Stuttgart Rotary Club about our continuum of care and its role in the communities in the Delta.



Hot Springs Village Christ of the Hills United Methodist Church's Martha Circle recently donated 60 handmade fleece blankets for the children and families in our care at Methodist Family Health. Pictured here from left to right are Rosemary Trehy, Elle Whittington and Susan Insell.

**Give the Gift of Christmas to a Child at
Methodist Family Health**



Christmas at Methodist Family Health

This year's online support for the children and adolescents of
Methodist Family Health is easier than ever before!

Just visit our new website to explore the three great ways to share
joy with our kids.

www.ChristmasatMFH.com

Website Options include:

1. Choose a child's name from our *Angel Tree* to purchase their full wish list.
2. Choose to purchase single items from a general wish list. These items will be used as gifts for those who come into our care at the last minute.
3. Contribute a general donation to the MFH "Share the Light" Christmas Campaign by clicking this link: <https://www.methodistfamily.org/donate.html> (choose "Share the Light Christmas Donations")

For more information please contact
Carolee Cook at ccook@methodistfamily.org
or call 501-906-4307



**We Saw Ourselves a Winner September 18 ...
and it was YOU!**

Methodist Family Health Foundation's 2021 virtual Southern Silks Stakes on September 18, presented by Gill Ragon Owen Attorneys, was a smashing success! Many thanks to our sponsors, donors, auction winners, participants and Southern Silks Stakes volunteer committee. Because of YOUR support, the



children and families in our care are the winners!

We had a great evening of fun consisting of our online auction and event video emceed by THV's Chief Meteorologist Tom Brannon, featuring our 2021 Southern Silks Stakes Chairs, Becka and Brian Webb, and a highlight piece focusing on the work of our Compassion Fund.

With YOUR help, \$143,467.75 was raised for Methodist Family Health. This total includes \$93,500 from 46 sponsors (10 of which were

new sponsors this year), \$25,190 from our online auction consisting of 46 packages, and \$25,140 for our Compassion Fund Special Appeal. The Compassion Fund purchases resources for the children and families in our care who need assistance in acquiring items to help in their therapeutic process. Some of the past items this fund has been used to purchase are:

- o Art therapy items for use at home
- o Inflatable mattress for student who was sleeping between chairs at home
- o Bus pass for six months for Arkansas CARES's client to get to work
- o Large computer monitor and keyboard for special needs client for virtual schooling
- o Flute for client who participated in band
- o All state choir fee for group home client
- o Nice pants and shoes for high school graduation
- o Clothing for foster children admitted as clients
- o Weighted blanket to reduce anxiety

We are looking forward to our 2022 Southern Silks Stakes, slated for September 17, 2022 at the Embassy Suites by Hilton in Little Rock. Please save the date!



THANK YOU TO OUR SPONSORS!

PRESENTED BY:



OWNERS



TRAINERS



JOCKEYS



CHARLOTTE & JIM GADBERRY BETTY & RICHARD HANSON AND BECKY & JERRY KOSOVER
ARITA & TOM JEWART KATHLEEN KENNALLY & MARK HOLDER JANNA & DAVID KNIGHT
ANNIE & JACK LANKFORD MARY & CLEF VAUGHAN

LEAD PONIES



KARON & BILL MANN

VIRTUAL

CHERRY & JIM DUCKETT

IN-KIND



Last year, you helped Methodist Family Health raise more than \$355,000 to serve abandoned, abused and neglected Arkansas children and families.

Would you share your light of hope, peace and stability with those in our care again this year?

The 2021 Share the Light Christmas Appeal is November 1 through December 31. **Special Offering Sundays in Arkansas's United Methodist Churches are December 12 and 19.** Would you save these dates to help us Share the Light this Christmas so those in our care can SHINE?

Please watch for more information in your inbox and mailbox about how you can contribute. Thank you for your generosity, commitment and compassion.

What is Your Legacy?

If you view your will as one last act of love in your life's story, it takes on a very different hue.

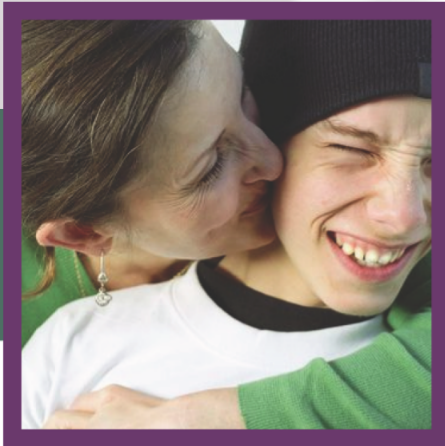
Unique as your life is, you will not only pass property to the individuals you choose, but it can also provide a way to make a gift to reflect your life's meaning.

A will is the easiest way to leave a gift to Methodist Family Health Foundation and be certain it will make a significant, positive difference.

For information about how to include Methodist Family Health in your will, contact Carolyn McCone, CFRE, executive director of Methodist Family Health Foundation, at 501-906-4202 or CMcCone@MethodistFamily.org.

A Gift that Pays Me Back?

What's not to like?



Learn about the gift that pays you back.

With a Charitable Gift Annuity, you can provide strategic, long-lasting support to Methodist Family Health Foundation and get benefits back for yourself. It's a WIN-WIN!

For More Information, Contact:

Carolyn McCone, CFRE
Executive Director
Methodist Family Health Foundation
501-906-4202
CMcCone@MethodistFamily.org

You Get:

- Steady cash flow for the rest of your life
- A high rate of return that's guaranteed, regardless of market fluctuations
- Tax-advantaged income, starting now or at a future date when you or a loved one will need extra cash
- An immediate charitable tax deduction
- Avoid capital gains tax when you fund your gift with appreciated stock.

You Give:

- Years of income to Methodist Family Health
- Significant support to future generations
- A lasting statement to the world about who you are and what's important to you.



Support Methodist Family Health Foundation

Your donation helps the Arkansas children and their families in our care. Will you give today to those in our care who are abandoned, abused, neglected and suffering psychiatric, behavioral, emotional and spiritual issues? Here are easy ways to give:

- **Text GIVE** to 501-881-2258 to initiate a donation you can easily manage on the go
- Donate **Online** now using our secure online donation form
- **Call** 501-906-4201 to make a secure contribution with your debit or credit card
- **Mail** your cash or check donation to:
 - Methodist Family Health Foundation
 - P.O. Box 56050
 - Little Rock, AR 72215-6050
- **PayPal** app. To donate via PayPal.com, click [here](#)
- **Venmo** app. To donate via Venmo.com, click [here](#)

Methodist Family Health SENTINEL
a publication of the [Methodist Family Health Foundation](#)

Carolyn McCone, CFRE, Executive Director
Amanda Smith, Director of Development
Kelli Reep, APR, Director of Communications
Jamie Griffith, Foundation Project Manager
Christy McCreight, Office Manager and Volunteer Coordinator

1600 Aldersgate Road
Little Rock, AR 72205
501-906-4201

The Sentinel is published 12 times a year.

For more information, contact:
Kelli Reep, editor
501-906-4210 and kreep@methodistfamily.org

Photos provided by: Methodist Family Health staff and volunteers © Methodist Family Health Foundation

Methodist Family Health is the management company of:

- Methodist Children's Home
- Methodist Behavioral Hospital
- Methodist Counseling Clinics
- Arkansas CARES

FOLLOW US at:

- [Facebook.com/methodistfamilyhealth@MethodistFamily](https://www.facebook.com/methodistfamilyhealth@MethodistFamily)
- [Instagram.com/methodistfamilyhealth](https://www.instagram.com/methodistfamilyhealth)
- [Twitter.com/MethodistFamily](https://twitter.com/MethodistFamily)
- [YouTube.com/MethodistFamilyHealth](https://www.youtube.com/MethodistFamilyHealth)

Methodist Family Health Board of Directors

Chairperson Bill Mann, Little Rock
Ritter Arnold, Marked Tree
Scott Beardsley, Paron
Harry Clerget, Little Rock
Dr. Charles Clogston, Little Rock
Russ Hannah, Jonesboro
Betty L. Hanson, Little Rock
Rev. Nathan Kilbourne, Sherwood
Rev. Michael Mattox, Rogers
Rev. C.E. McAdoo, Little Rock

Judge Robert McCallum, Hot Springs
W.A. McCormick, Little Rock
Bishop Gary Mueller, Little Rock
Jamilyn Noble, North Little Rock
Rev. Jim Polk, Little Rock
Neill Sloan, Lake Village
Don Weaver, Conway

Methodist Family Health Foundation Board of Directors

Chairperson Jan Green, Little Rock
Ritter Arnold, Marked Tree
Linda Barnes, Little Rock
Misty Baugh, Little Rock
Laura Borg, Little Rock
Ray Dillon, Little Rock
Jim Duckett, Little Rock
Pam Gadberry, Little Rock
Clay Gordon, Little Rock
Marci Hall, Little Rock
Karla Hilburn, Little Rock
Arita Jewart, Little Rock
Becky Kossover, Little Rock
Rev. Annie Lankford, Little Rock
Sherry Rowbotham, Little Rock
Max Sharp, Little Rock
Cody Simon, Little Rock
Neill Sloan, Lake Village
Bill Spivey, Little Rock
Cleifton Vaughan, Little Rock, emeritus
Don Weaver, Conway

**The mission of Methodist Family Health is
to give the best possible care
to those who may need our help.**

Methodist Family Health | 1600 Aldersgate Road, Little Rock, AR 72205

[Unsubscribe {recipient's email}](#)

[Update Profile](#) | [Constant Contact Data Notice](#)

Sent by kreep@methodistfamily.org powered by



Try email marketing for free today!